

# OSU Marching Percussion Exercises

OSU 2001  
TCM and WEB

## Volume 6

### Snare

Two staves of musical notation for a snare drum exercise. The first staff is in 7/8 time, showing a rhythmic pattern of eighth notes on the right (R) and left (L) sides, with a double bar line and a '2' above it. The second staff is in 6/8 time, showing a similar pattern, also with a double bar line and a '2' above it. The exercise concludes with a final measure in common time (C) with a quarter note and a fermata.

### Var. 1

Two staves of musical notation for a snare drum exercise, labeled 'Var. 1'. The first staff is in 7/8 time, showing a rhythmic pattern of eighth notes with accents (>) on the right (R) and left (L) sides, with a double bar line and a '2' above it. The second staff is in 6/8 time, showing a similar pattern, also with a double bar line and a '2' above it. The exercise concludes with a final measure in common time (C) with a quarter note and a fermata.

### Tenor

Two staves of musical notation for a tenor drum exercise. The first staff is in 3/4 time, showing a rhythmic pattern of eighth notes on the right (R) and left (L) sides, with a double bar line and a '2' above it. The second staff is in 6/8 time, showing a similar pattern, also with a double bar line and a '2' above it. The exercise concludes with a final measure in common time (C) with a quarter note and a fermata.

### Var. 1

Two staves of musical notation for a tenor drum exercise, labeled 'Var. 1'. The first staff is in 3/4 time, showing a rhythmic pattern of eighth notes with accents (>) on the right (R) and left (L) sides, with a double bar line and a '2' above it. The second staff is in 6/8 time, showing a similar pattern, also with a double bar line and a '2' above it. The exercise concludes with a final measure in common time (C) with a quarter note and a fermata.

Bass Unison

R L R L

R L R L R

Var. 1

R L R L

R L R L R

Bass Split #1

R L R

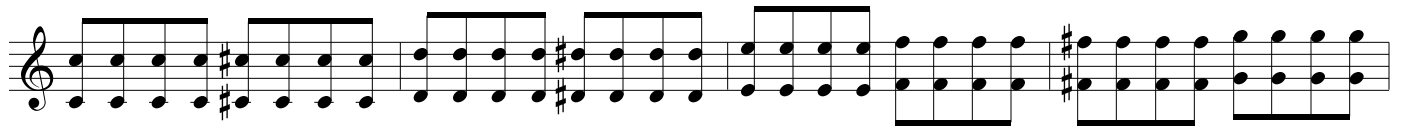
Bass Split #2

R L R L L R

R

R

Keyboard



(Play at all intervals, especially M3, P4, P5, and M6)

