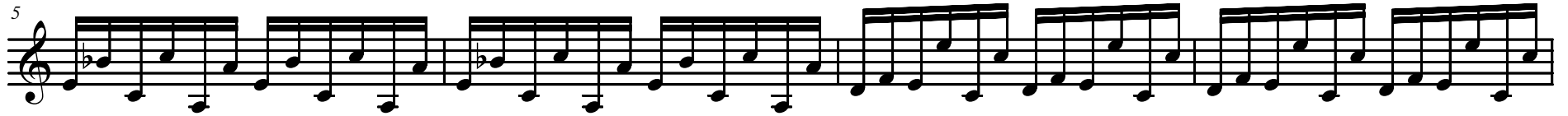
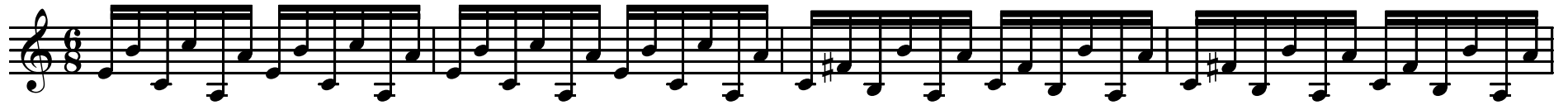


prelude

N. Jones



2

26

prelude

Suggested practice method...

The image shows a musical score on a grand staff. On the left, there is a treble clef and a bass clef. A rectangular text box with a black border is placed over the first few notes of the bass staff, containing the text "Suggested practice method...". The music consists of a series of eighth-note chords, primarily triads, moving up the scale. The first four measures are in C major (C4-E4-G4), the next two in G major (G4-B4-D5), and the final two in D major (D4-F#4-A4). The notation includes stems, beams, and individual notes for each chord.